



# Observer® Product Family

## Proven Network Management, Analysis and Troubleshooting Solutions

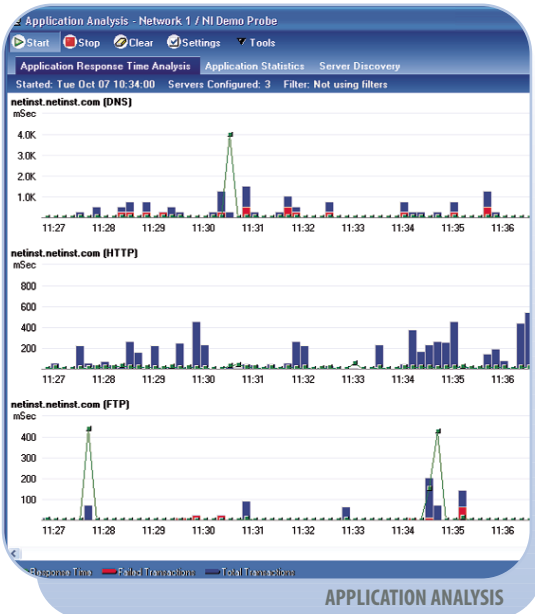


OBSERVER'S MAIN CONSOLE

### Protocol Analysis, Real-Time Statistics, Trending and Network Troubleshooting



- Capture, view and decode network traffic in **real-time**
- Analyse network traffic to **diagnose critical problems**
- Collect long-term trending statistics for **proactive decision making**
- Detect abnormalities quickly with **custom triggers and alarms**



APPLICATION ANALYSIS

### Pinpoint Difficult Problems Through Expert Analysis



- Predict network bandwidth and response time impacts using **“What-If” Analysis**
- Track and solve application problems with **Application Analysis**
- Receive accurate high-speed, high-volume packet capture with a **4GB memory buffer**
- View application session flows graphically with **Connection Dynamics**
- Pinpoint difficult problems through real-time or post-capture **Expert Analysis**



SWITCH UTILIZATION

### The Most Feature-Rich Network Management and Analysis Solution



- Optimize network devices (including switches and routers) with a full **SNMP management** console
- Monitor LANs/WANs from a central location using **RMON1, RMON2** and **HCRMON** collection consoles
- View statistics from any browser using the built-in **Web reporting** service

# Choose Your Level of Control

## Packet Capture and Decode

Decode over 500 primary protocols  
Countless subprotocols  
Nanosecond resolution  
Directional indicators for full-duplex capture  
4GB Memory Buffer

## Unlimited Filtering Options

Use Boolean logic for creating complex filters  
Design filters visually  
Instantly create protocol filters from list  
Share complete filter lists between Observer users  
Filter for virus and attack signatures  
Fast Post Filtering for quick execution  
Pre-Filtering for Data Mining

## Cross Mode Drill Down

Instantly displays detailed data information

## Network Trending and Reporting

Network Trending Dashboard Display  
Efficiency History  
Comparison Analysis Reports and Summary  
Ready Made Reports

## Real-Time Statistics

Network Summary  
Bandwidth Utilization  
Top Talkers  
Internet Observer  
Protocol Distribution  
Network Activity Display  
Wireless Site Survey  
Wireless Access Point Load Monitor  
Switch Statistics  
Router Observer  
Pair Statistics  
VLAN Statistics

## Triggers and Alarms

Flag activities or errors with a predefined list  
Set custom notifications based on any filter  
Receive immediate alerts when security threats are detected  
Choose alert method (email, pager, etc.) and schedule response (ex. launch program)

## Error Tracking

Network Vital Signs Mode  
802.11 Vital Signs  
Network Errors by Station  
  
HP OpenView Integration

OBSERVER

## Over 500 Real-Time Experts

Expert Summary Problem Analysis  
TCP/UDP/ICMP Events  
IPX Events  
NetBIOS Events  
Expert Wireless Events  
Time Interval Analysis

## Unique Expert Analysis

Connection Dynamics  
WAN Delay Analysis  
Server Analysis  
"What-If" Modeling  
VoIP Analysis

## Application Analysis

Real-Time and Post Capture  
Monitor response time  
View total/failed transactions  
Track application session flows  
Provide statistics on errors  
Automate server/application discovery

3DES Encryption

EXPERT OBSERVER

## SNMP Device Management

Review readable and writable SNMP objects  
Monitor and set notifications based on Traps  
Supports SNMP 1, 2 and 3 with MIB compiler

## Network Trending and Reporting

Report SNMP data in real-time

## Switch Station Locator

Identify users' port location by switch

## RMON Device Management

Full support for all 21 RMON and HCRMON groups  
Enhanced RMON Filtering

## Web Publishing Service

Publish network 'weather reports' to intranet or extranet

OBSERVER SUITE

## About Network Instruments

Network Instruments is the industry leading developer of distributed, user-friendly and affordable network management, analysis and troubleshooting solutions. The award-winning Observer family of products combines a comprehensive management and analysis console with high-performance remote Probes to provide integrated monitoring and management for the entire network (LAN, 802.11 a/b/g, Gigabit, WAN). All Network Instruments products are designed utilizing our Distributed Network Analysis (NI-DNA™) architecture. With NI-DNA, the Observer solution set simplifies network troubleshooting and management, optimizes network and application performance and scales to meet the needs of any organization. Founded in 1994, Network Instruments is headquartered in Minneapolis, Minnesota with offices in London, Paris and throughout the USA with

distributors in over 50 countries. More information about the company, products, innovation, technology, NI-DNA, becoming a partner and NI University can be found at: [www.networkinstruments.com](http://www.networkinstruments.com)

## Contact Us

Corporate Headquarters  
Network Instruments, LLC  
8800 West Highway Seven  
Fourth Floor  
Minneapolis, MN 55426  
USA  
800-526-7919 toll-free  
(952) 932-9899 telephone  
(952) 932-9545 fax  
[www.networkinstruments.com](http://www.networkinstruments.com)

European Office  
Network Instruments  
7 Old Yard  
Rectory Lane  
Brasted, Westerham  
Kent TN16 1JP  
United Kingdom  
+ 44 (0) 1959 569880 telephone  
+ 44 (0) 1959 569881 fax  
[www.networkinstruments.co.uk](http://www.networkinstruments.co.uk)

