



Advanced Probe Appliance

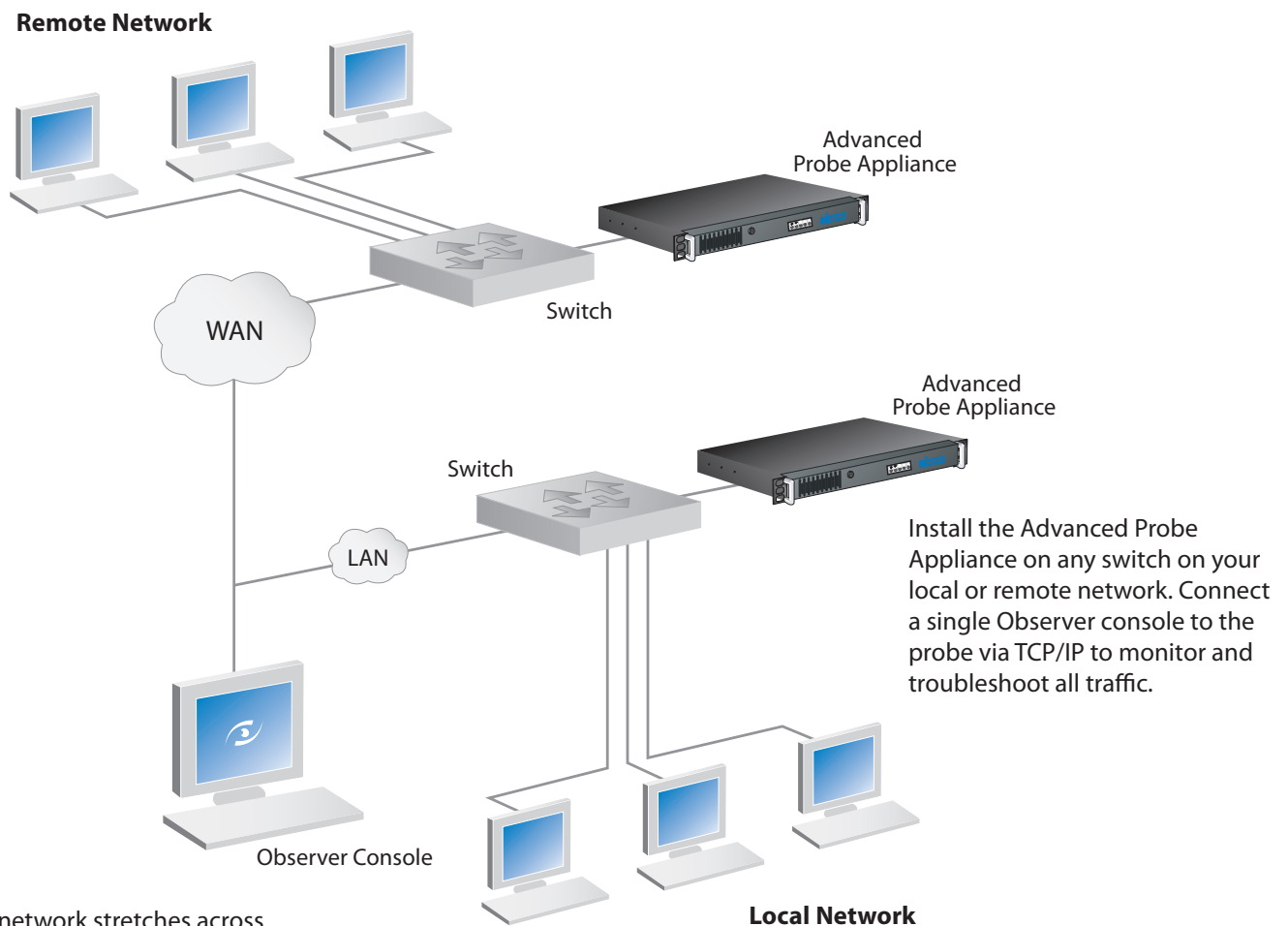
For 10/100/1000 Networks

Obtain Total Network Intelligence with Fully Configured, Turn-Key Appliances

As corporate networks continue to grow to support multiple departments, locations, business functions and remote users, robust remote monitoring solutions become crucial. Remote probes have changed the way IT departments are structured. Today, with a console and remote probes, an IT manager can proactively monitor, troubleshoot and respond to any network problem from any location. Network Instruments' probes offer complete insight and visibility into every part of an organization's business-critical IT infrastructure. Choose from a variety of pre-configured rack mount systems for an easy, cost-effective way to monitor any part of the network.

Use the Advanced Probe Appliance for real-time monitoring and troubleshooting:

- Capture and decode packets for in-depth analysis
- Collect long-term trending statistics for proactive decision making
- Run Triggers and Alarms for instant alerts on probe-collected data
- Monitor the entire network from a single user interface—only one console needed to view multiple probes
- Reduce expenses by eliminating travel and resolving multiple, remote network issues from one location
- Reduce training by using one solution to monitor all topologies and network configurations
- Works with Observer[®], Observer Expert or Observer Suite consoles



Whether your network stretches across the building or across the globe, Network Instruments' probe appliances have it covered.

Software Options

The Advanced Probe Appliance can be configured with one of the following software options:

Advanced Single Probe

- Packet capture and decode
- Network statistics
- Real-time data collection
- Long-term trending and reporting
- Full password protection of data and redirection
- Automatic updates of remote probes

The Advanced Single Probe reports to any Observer, Observer Expert or Observer Suite console.

Advanced Multi-Probe

The Advanced Multi-Probe offers all the features of the Advanced Single Probe plus additional advantages for remote monitoring:

- Initiate up to 64 sessions for a multi-faceted view of data flow
- Multiple Observer consoles can view the same probe at the same time for greater problem solving abilities
- 3DES encryption option for data transfer
- Set unique levels of probe access for added security

The Advanced Multi-Probe reports to any Observer Expert or Observer Suite console.

Advanced Expert Probe

The Advanced Expert Probe offers all the features of the Advanced Multi-Probe plus additional advantages for faster troubleshooting:

- Perform real-time Expert Analysis locally at the probe – no need to transfer captured data back to the console
- View remote packet decodes in real time from any console
- Collect NetFlow and sFlow® data
- Turn any probe into a local console for onsite analysis and administration

The Advanced Expert Probe reports to any Observer Expert or Observer Suite console.

License any Advanced Probe as an RMON probe:

- Full adherence to RMON1/2, and High Capacity RMON (HCRMON) standards
- Reports to any RMON management console or collection facility (Observer Suite, OpenView, Concord, NetScout, IBM/Micromuse, BMC Dashboard Patrol, etc.)

Technical Specifications

Platform 1.3U rack mount, Weight: 20 lbs, Mounting Depth: 23.30 in. (59.19 cm)

System Specs A complete system, running Windows XP, Includes one copper or fiber 10/100/1000 Ethernet monitoring port (or two ports with the dual-port option). Includes one out-of-band Ethernet management port.

Hardware Options

The Advanced Probe Appliance is available in four hardware configurations:

Single-Port Copper

Equipped with a single 10/100/1000 copper interface

Single-Port Fiber

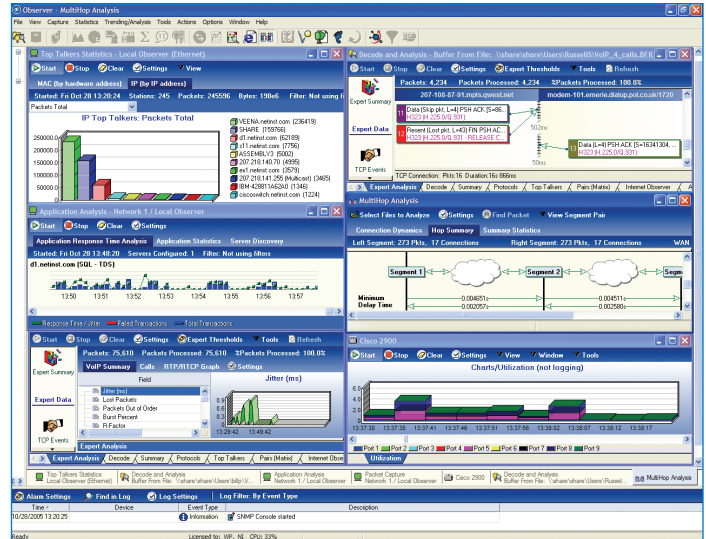
Equipped with a single gigabit fiber interface

Dual-Port Copper

Equipped with two 10/100/1000 copper interfaces

Dual-Port Fiber

Equipped with two gigabit fiber interfaces



Observer Suite Main Console

For additional technical specifications, please visit our web site at: www.networkinstruments.com

About Network Instruments

Since 1994, Network Instruments, a leading provider of performance management and troubleshooting solutions, has helped organizations ensure the delivery of business-critical applications. The company's platform of management and reporting products provides comprehensive visibility into networks and applications to optimize performance, speed troubleshooting, and assist long-term capacity planning. Headquartered in Minneapolis, the company does business in more than 50 countries. For more information, please visit www.networkinstruments.com.



Corporate Headquarters

Network Instruments, LLC • 10701 Red Circle Drive • Minnetonka, MN 55343 • USA
toll free (800) 526-7919 • telephone (952) 358-3800 • fax (952) 358-3801
www.networkinstruments.com

European Headquarters

Network Instruments • 7 Old Yard • Rectory Lane • Brasted, Westerham • Kent TN16 1JP • United Kingdom
telephone + 44 (0) 1959 569880 • fax + 44 (0) 1959 569881
www.networkinstruments.co.uk