

OBSERVER[®] 13

New Features Guide

Application Performance Monitoring

Enhanced GigaStor Interface

Expanded Application Visibility

NetLive

NetFlow

Financial Analysis

GigaStor File Structure

Data-Stream Reconstruction

Data-at-Rest Security

Expanded Topology Support



From Observer Reporting Server's customizable, high-level reporting features to increased GigaStor™ performance and expanded wireless and topology support, Observer 13 provides major new features that will excite new users and Observer pros alike. Download a demonstration version at www.networkinstruments.com, and test-drive the latest in performance monitoring.

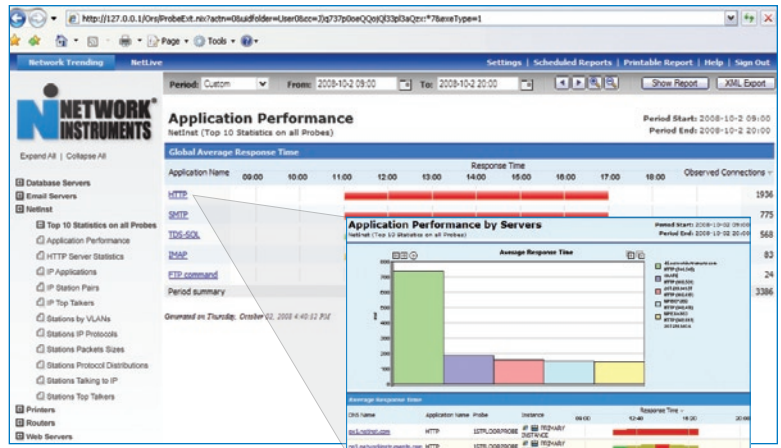
Application Performance Monitoring

Use Application Performance Monitoring to graphically track application performance and perform quick next-step analysis. Performance is presented on a color-coded scale of good to poor, allowing periods of poor performance to be easily identified. Additionally, the height of the color-coded bars indicates traffic volume.

From top-layer application reports, engineers can drill down to specific host servers or conversations to identify sources contributing to poor performance. Couple this with new auto-baselining in the Observer Reporting Server (ORS) for a more powerful performance monitoring solution that establishes baselines and thresholds and identifies when thresholds are exceeded.

Performance Monitoring Benefits:

- Understand critical application performance at a glance
- Track and quickly identify time periods of poor performance
- Perform single-click root-cause analysis from application-level reports
- Automatically establish performance benchmarks and thresholds
- Easily identify when application performance exceeds thresholds



Single-click root-cause analysis from application-level reports

Application Performance Monitoring is available with Observer Expert, Observer Suite, Expert Probes, and ORS. Auto-baselining is available with ORS.

Enhanced GigaStor Interface

The new GigaStor Active Reporting feature includes powerful drill-down capabilities, customizable next-step analysis, and immediate report generation—all designed to reduce mean time to resolution. From the selected time-period view, engineers drilling into network and application metrics can determine the next step of their investigation by choosing from an extensive list of related reports. Based upon the investigation at hand, automatic filters are dynamically created to speed root-cause analysis.

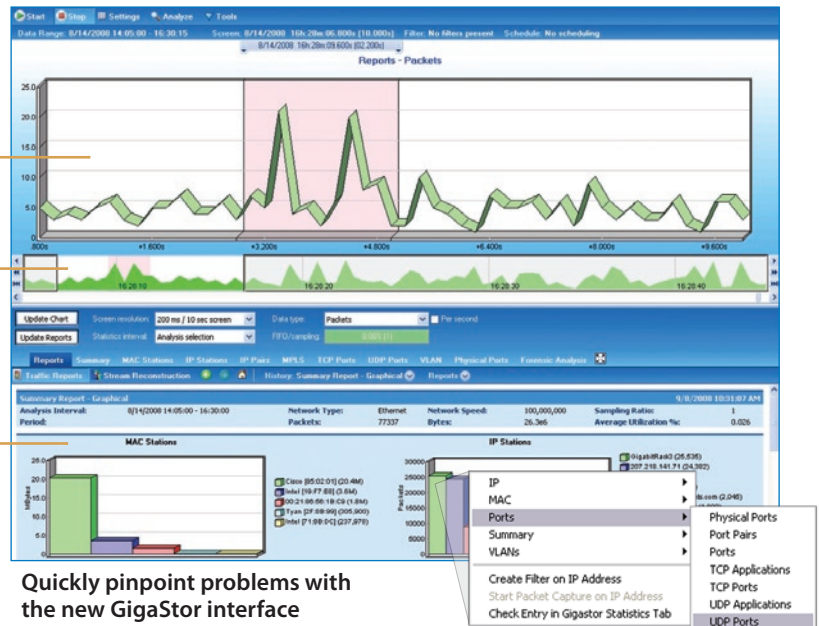
Upgrades to the time-navigation interface improve problem identification. New macro and micro timeline views provide users both a big-picture view and a micro view to quickly pinpoint problems.

Available with GigaStor.

Micro

Macro

Customize GigaStor reports



Quickly pinpoint problems with the new GigaStor interface

GigaStor File Structure

The new GigaStor File Structure has been optimized to handle the high demands of retrospective network analysis. Existing GigaStor users will notice significantly increased performance with data mining and analysis.

Benefits of the GigaStor File Structure:

- Eliminates fragmentation concerns
- Improved performance and reliability
- Faster data mining and analysis

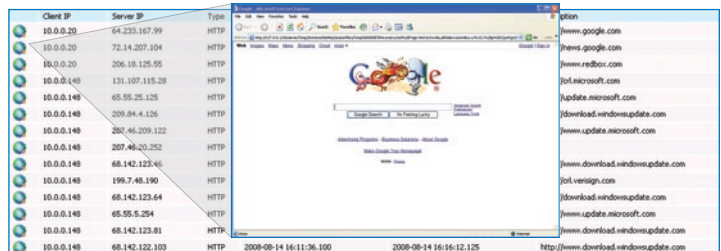
Available with the GigaStor.

Data-Stream Reconstruction

The new data-stream reconstruction interface and workflow simplifies and streamlines the file reconstruction process. Automatically detect and reconstruct relevant files when gathering evidence or investigating suspicious network activities.

Use data-stream reconstruction to recreate communications, web pages, e-mails, and instant messages.

Available with Observer Expert, Observer Suite, and GigaStor.



Quickly reconstruct web pages and communications with the new stream reconstruction workflow and interface

Data-at-Rest Security

Encrypt data stored on the GigaStor using the Advanced Encryption Standard (AES) to ensure information security. AES is required by some U.S. government agencies and can be important for companies concerned about PCI and HIPAA regulations.

Available with the GigaStor.

Expanded Topology Support

For large organizations and carriers monitoring OC topologies, Observer provides monitoring and analysis of OC-3c and OC-12c and decodes OC-related protocols. Observer supports Packet over SONET (POS), asynchronous transfer mode (ATM) over OC, and ATM over SONET.

Network Instruments continues to develop its in-depth WLAN analysis capabilities by supporting the emerging wireless standard 802.11n.

Use Observer Wireless Analysis to:

- Monitor signal strength and quality
- Compare wired to wireless performance
- Detect rogue access points
- Conduct wireless site surveys

OC-3c/OC-12c support is available with Observer Expert and Observer Suite consoles in conjunction with an OC Probe. 802.11n support is available in all Observer consoles and probes.

About Network Instruments

Network Instruments provides in-depth network intelligence and continuous network availability through innovative analysis solutions. Enterprise network professionals depend on Network Instruments' Observer product line for unparalleled network visibility to efficiently solve network problems and manage deployments. By combining a powerful management console with high-performance analysis appliances, Observer simplifies problem resolution and optimizes network and application performance. The company continues to lead the industry in ROI with its advanced Distributed Network Analysis (NI-DNA™) architecture, which successfully integrates comprehensive analysis functionality across heterogeneous networks through a single monitoring interface. Network Instruments is headquartered in Minneapolis with sales offices worldwide and distributors in over 50 countries. For more information about the company, products, technology, NI-DNA, becoming a partner, and NI University please visit www.networkinstruments.com.

Solution Bundles

Contact a Network Instruments representative or dealer to ask about product bundles that cover all of your network management needs.



Corporate Headquarters

Network Instruments, LLC • 10701 Red Circle Drive • Minnetonka, MN 55343 • USA
toll free (800) 526-7919 • telephone (952) 358-3800 • fax (952) 358-3801

www.networkinstruments.com

European Headquarters

Network Instruments • 4 Old Yard • Rectory Lane • Brasted, Westerham • Kent TN16 1JP • United Kingdom
telephone + 44 (0) 1959 569880 • fax + 44 (0) 1959 569881

www.networkinstruments.co.uk